

ACO DRAIN

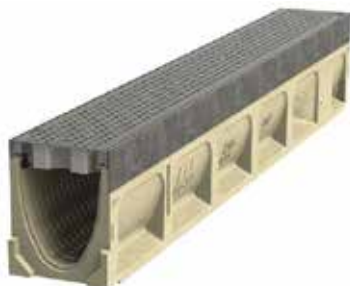
Dallas Cowboys Stadium/Field Frisco, TX



PROJECT PORTFOLIO

Product:
Specifier:
Contractor:
Sub-Contractors:

KlassikDrain KS100, Sport 2000, Sport 4000, catch basins
Gensler Architects, Dallas, TX
Manhattan Construction Co., Dallas, TX
Bandt Construction, Carrollton, TX
Hellas Construction, Austin, TX



The Dallas Cowboys Stadium is more than the home of the Dallas Cowboys, it's a world of facts and figures about the world's largest domed structure, an art museum, a classroom. The things you can do inside the stadium are endless.

The KlassikDrain KS100, Sport 2000, Sport 4000, and 9 catch basins (680 ft) were used to help with drainage.